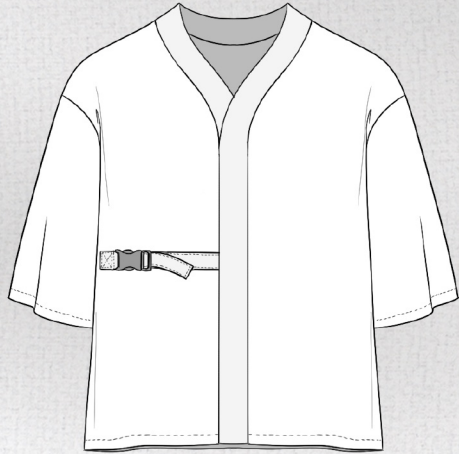
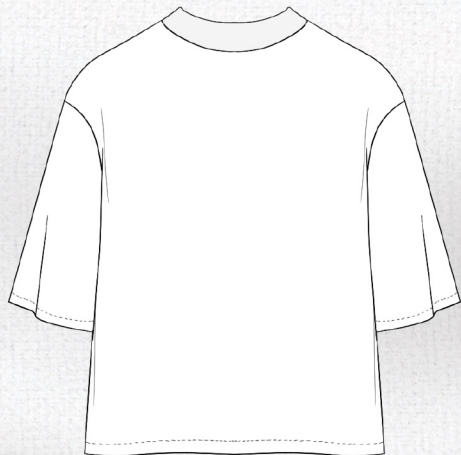


SKETCHES

FRONT

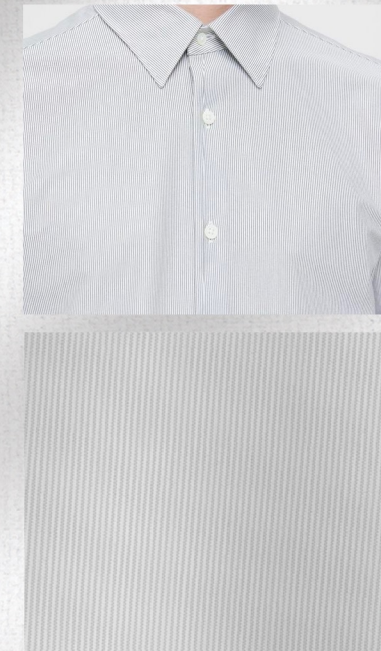


BACK



FABRICS

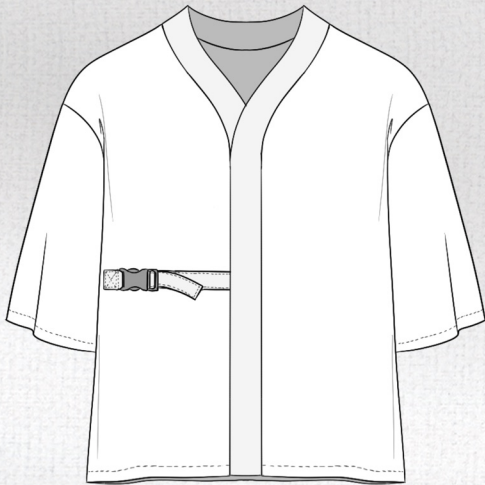
- Linen/Cotton Base
- White
- Lightweight and soft
- **Use different stripe design for contrast** (Only for 1x front panel and strap)



SKETCHES

TRIMS

- Use a plastic buckle for straps
- Same color as fabric



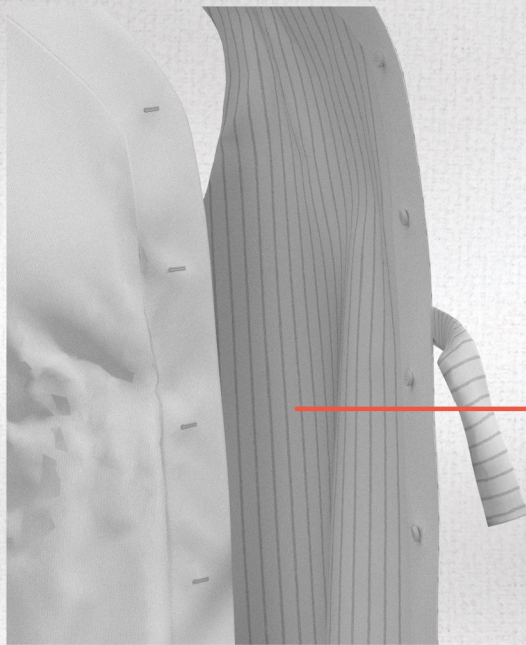
OPTION 2

- If unable to find a buckle, leave it and use tying method instead.

SKETCHES

TRIMS

- Use same colored buttons for 'left over right' closure
- Buttons are sewn on the big striped panel
- **Button size: 1cm**



Use soft interfacing for collar panel

SKETCHES



2.5cm sleeve hem stitch

3cm hem stitch

FINISHING

French seam finish for a clean look on the inside